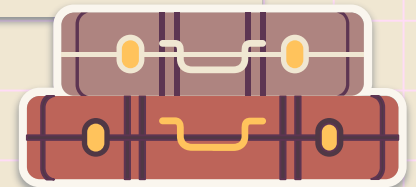




**HCI+D**

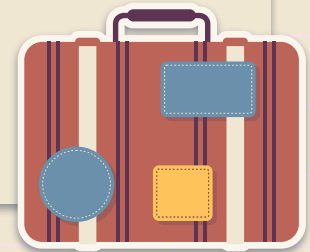
**Hi-Fi Prototype**

**Team 1**



# Outline

- 01 Introduction**
- 02 Overview of Revised Design**
- 03 Prototype Implementation Status**
- 04 Demonstration of Prototype**
- 05 Summary**



01

# Introduction



# Team Members



許博翔  
Hsiang, Hsu



張琪  
Grace Theodore



黃敬媛  
Jing-Yuan, Huang



鄧英杰  
Miguel Then

# Value Proposition



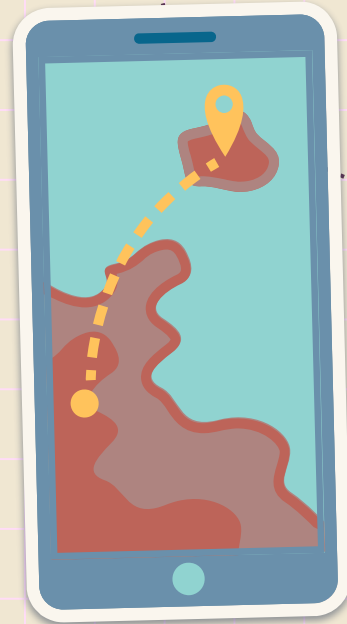
## **TripTeddy**

**Trip with your travel buddy**



02

# Overview of Revised Design



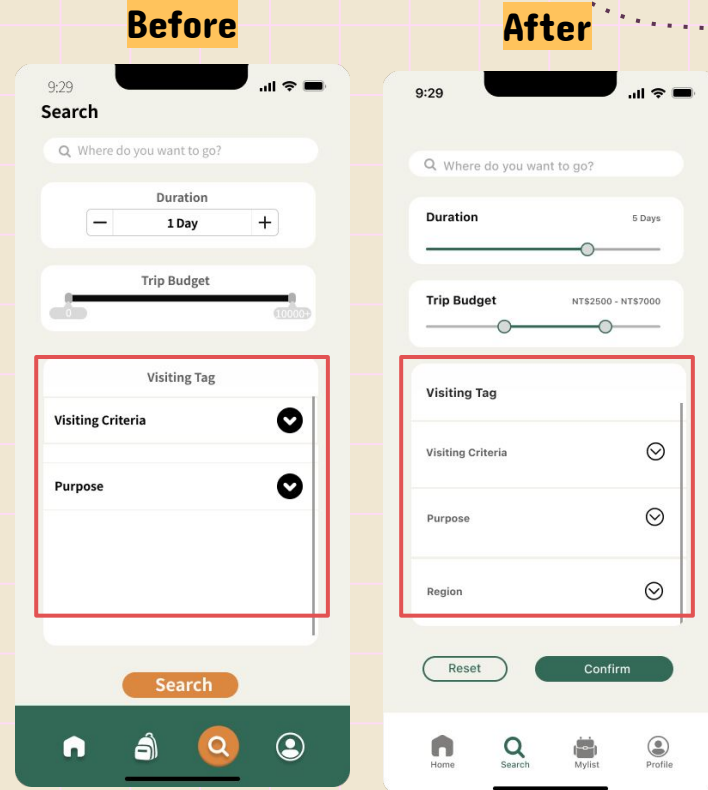
# Added region tag in filter

## Description

We added a region tag in the filter area to aid the users search for playlist.

## Rationale

It would be more efficient for users to filter the region that he/she would like to visit.



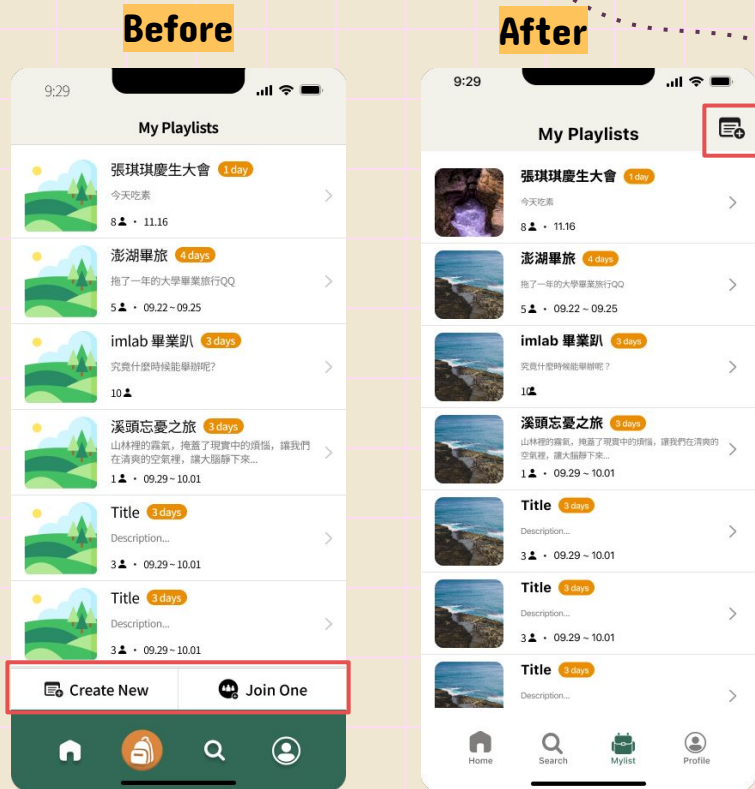
# Modified playlist button placement

## Description

We remove the *join playlist* function and move the *create new playlist* button to the top right corner.

## Rationale

The join function on this page is a bit unnecessary, and the moving of button follows the iOS design pattern.





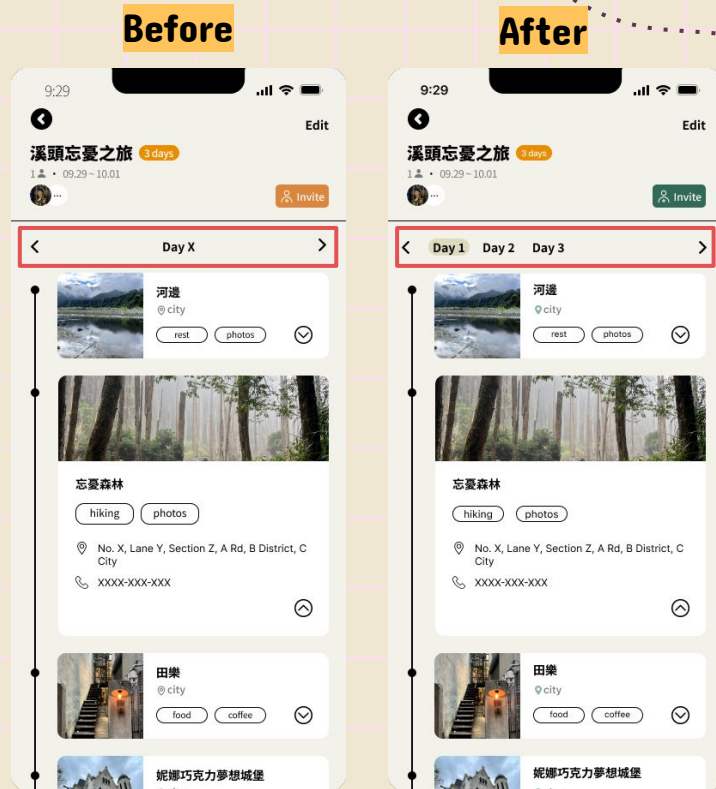
# Changed the day navigation of spots

## Description

We simplify the day navigation method by putting all spots in one page and using *day* tab on top of page.

## Rationale

Users do not need to navigate back and forth to check/edit the spots for different days.



# Changing of “pop-up” filter into “dropdown”

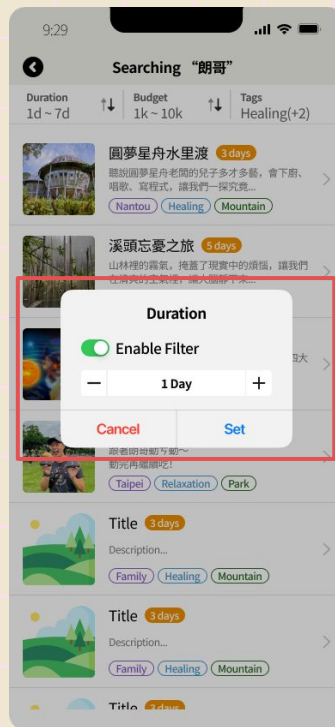
## Description

We change the pop-up filter into dropdown filter and make it as an overlay with the filter component at the top of our page.

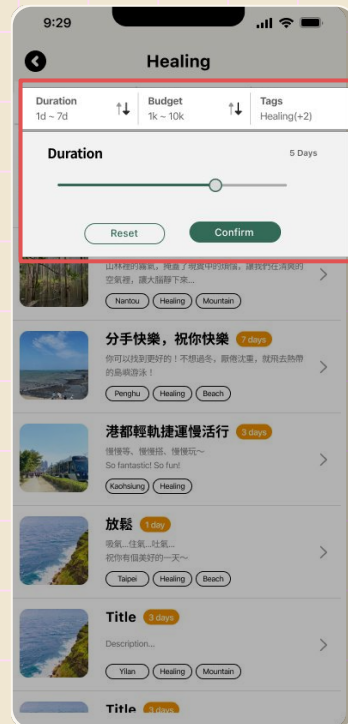
## Rationale

It's not a design pattern for iOS to have sliders or counter in the pop-up components.


Before

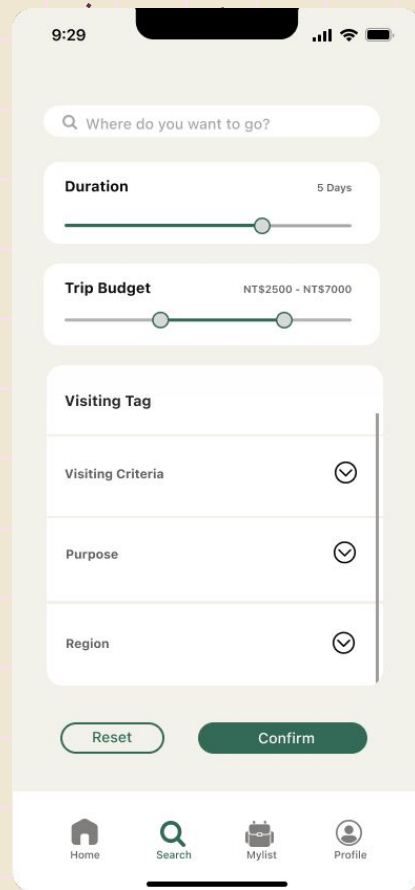
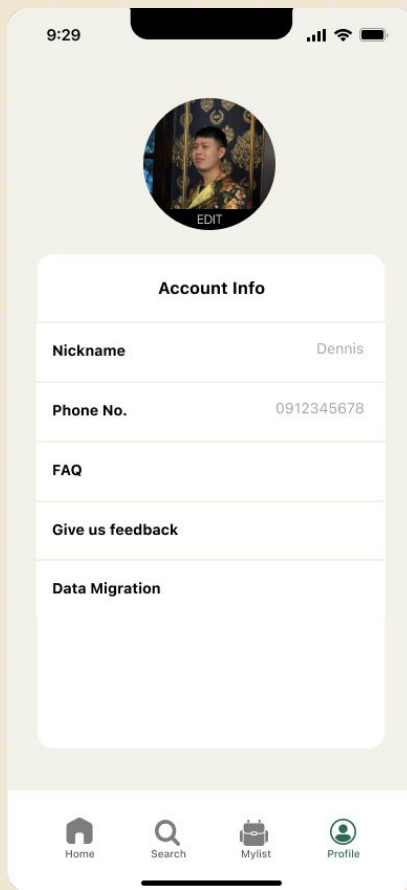
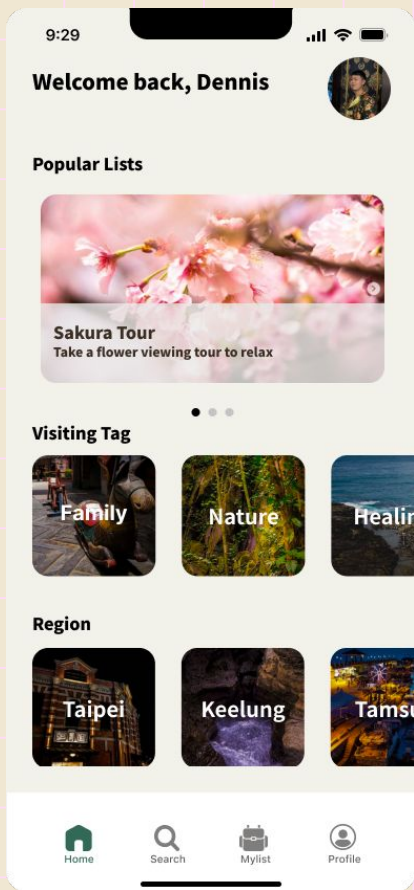


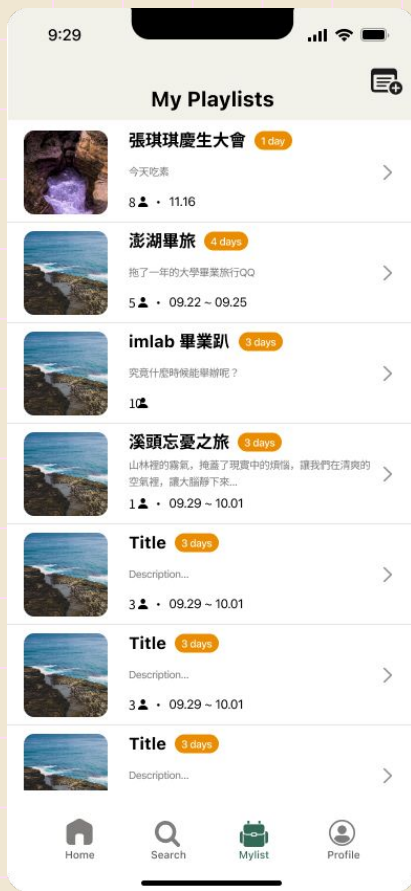
After



# Overview of Revised Design

- **Changed the overall design according to iOS design pattern (e.g. used more simplified icon design which are more frequently seen).**
  - **Matched the design of each components over different pages to increase consistency.**
  - **Decided on the color scheme, font, and theme for our app.**
- 





**03**

**Prototype  
Implementation  
Status**



# Tools Being Used



**SwiftUI**

**Deployment Target**

**Iphone iOS 16.0+**

# Implemented Features

## Simple

Find out an itinerary that best fits the needs.

- **UI:**
  - Home Page
  - Profile Page
  - Search Page
  - Search Result Page
- User can interact with fields in Home Page & Search Page and will be directed to Search Result Page with fake data.



# Unimplemented Features

## Moderate


Plan a trip basing on the given template.

## Hard

Share the trip schema with friends and edit the trip.

- **UI:**
  - **Playlist Page**
  - **List Page**
  - **Spots Overview Page**
- **User can search related playlists basing on filters.**
- **User can see the details of playlist, edit list, and share list with friends.**

# Future Plan

- Implement remaining UI on native app.
  - Create function to enable user input and data handling.
  - Collect travel spots and playlists data from internet for our database.
  - Implement backend server such that users can create their own profile and collaborate on the trip planning (low priority).
- 

# Hard-coded Data

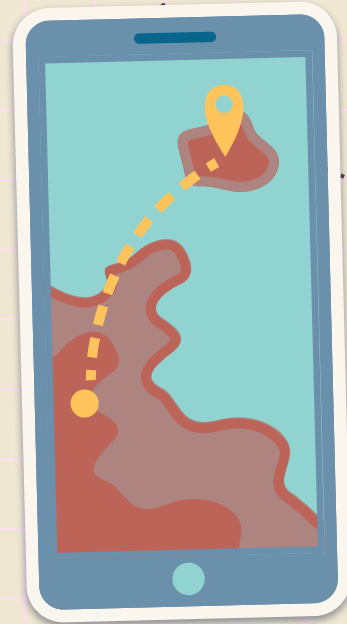
- **Hi-Fi v1**
  - **The search filter function has interactable sliders and buttons, but it only leads to a predetermined result.**
  - **Fake data is used to ensure that search function can be carried out.**
- **Hi-Fi v2**
  - **Database is stored in local storage.**





04

# Demonstration of Prototype



05

# Summary



# Summary

- **Finalized our app design to be more integrated according to iOS design pattern.**
- **Started the native app production using SwiftUI.**
- **Deployed Hi-Fi Prototype v1 for iPhone iOS 16.0+.**
- **Plan to finish all the UI on native app with local database and will create backend server to provide a better app experience if time permits.**



# Thanks for Listening

Icons used by macrovector, rawpixels, iconicbestiary on Freepik

Slide template provided by Slidesgo

Many thanks to the interviewee for their time for this needfinding research